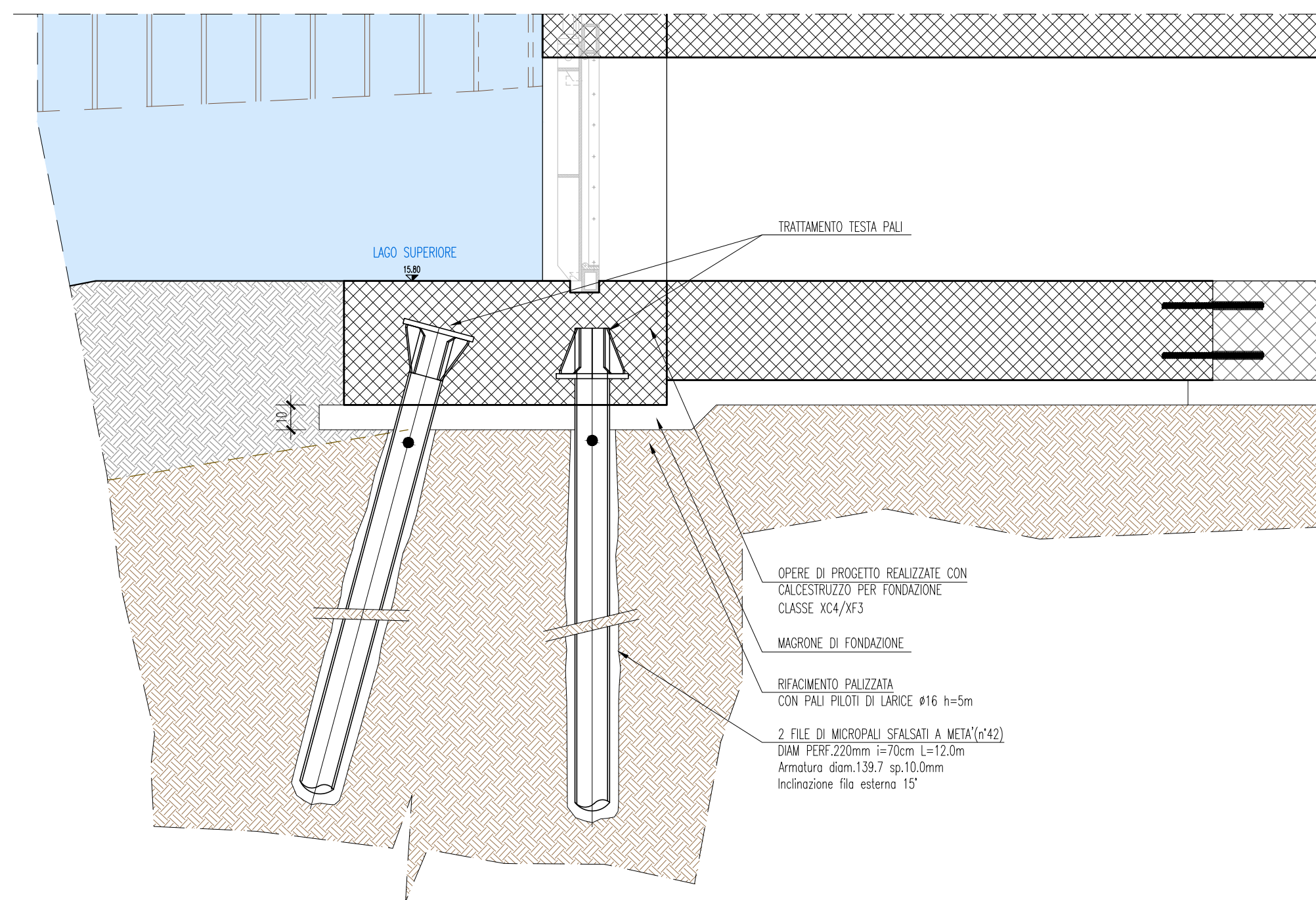
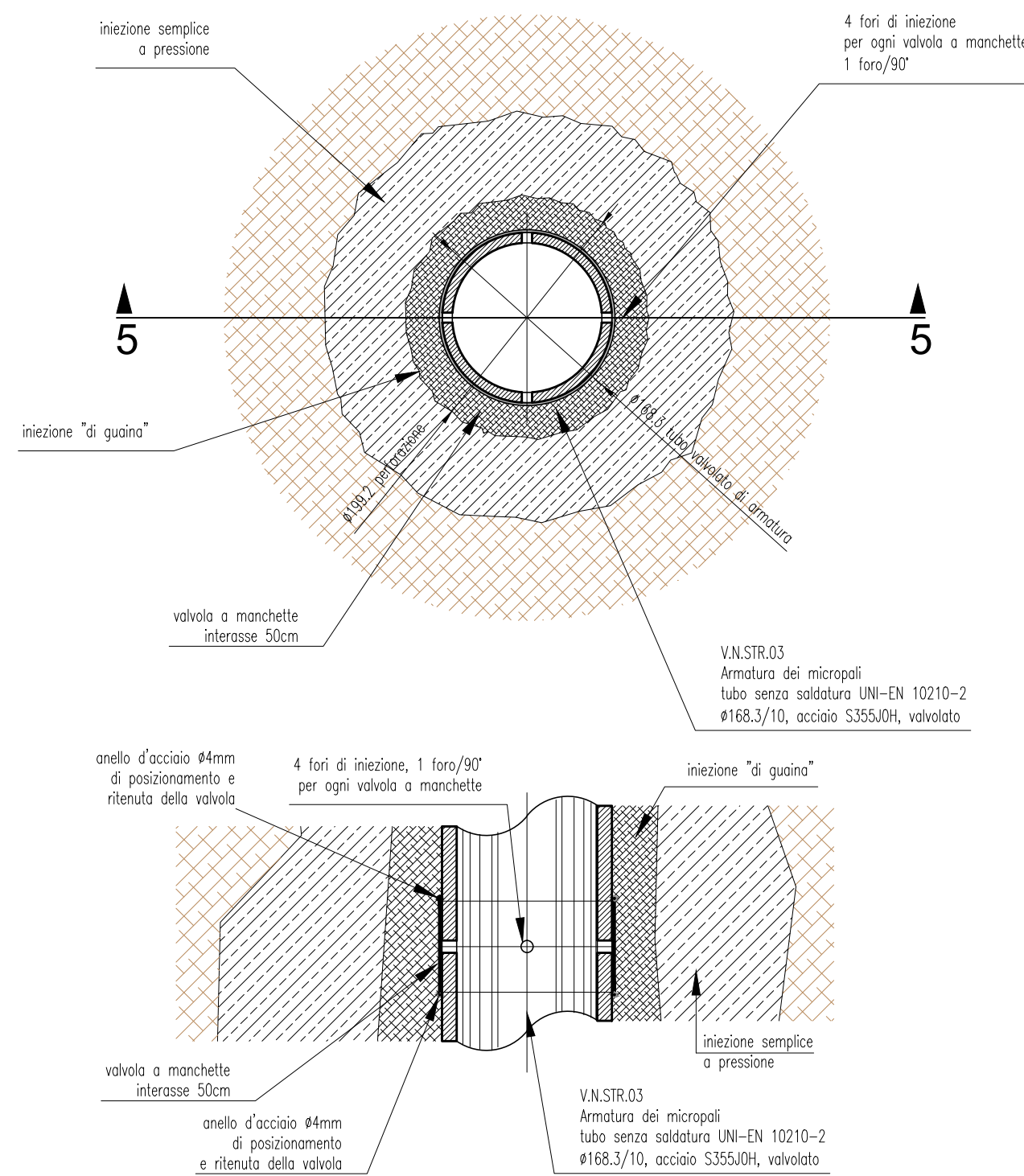


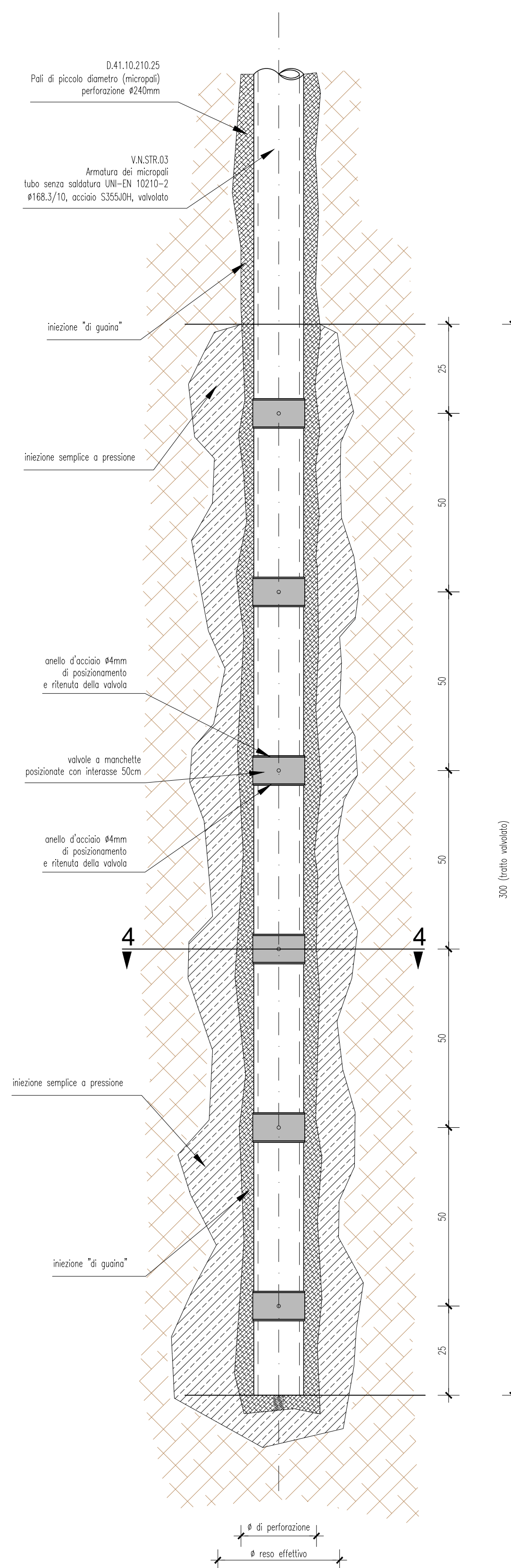
SEZIONE TIPOLOGICA 1:20



SEZIONI 4-4 E 5-5 SCALA 1:5

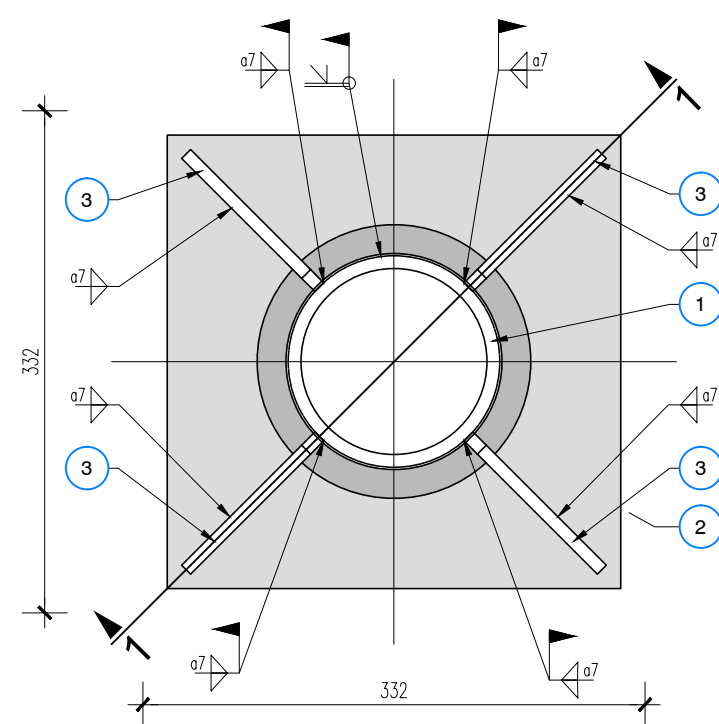


DETTAGLI MICROPALI VALVOLATI SCALA 1:10

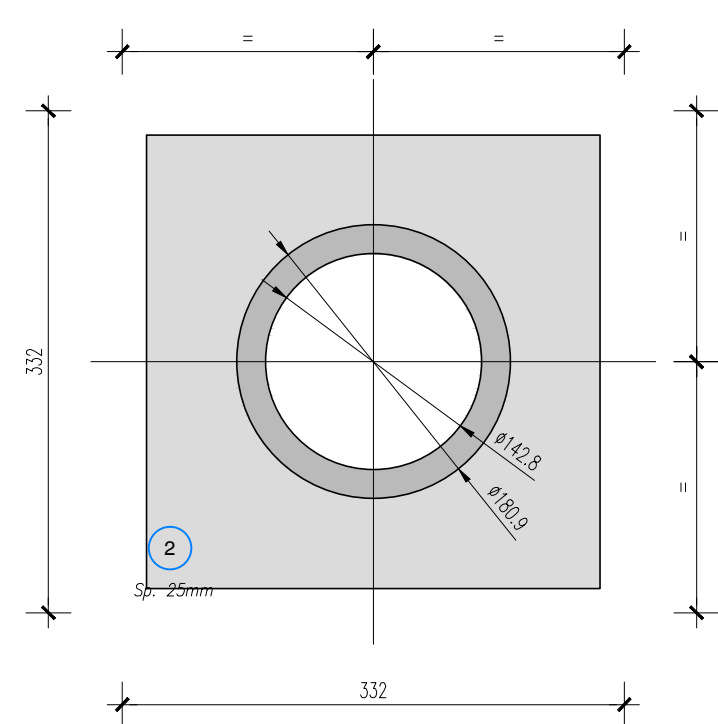


DETTAGLIO TESTA PALI ANTERIORI

PIANTA SCALA 1:5

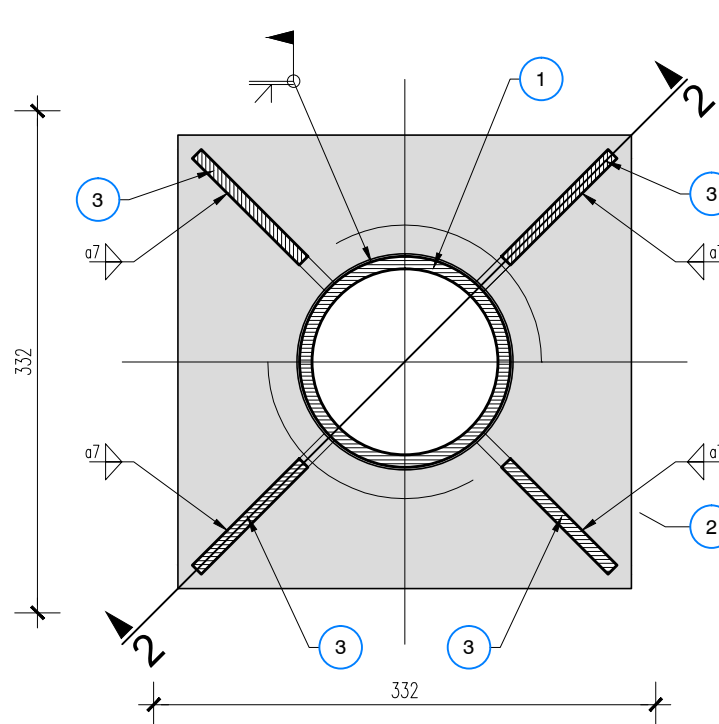


PIASTRA DI TESTA SCALA 1:5

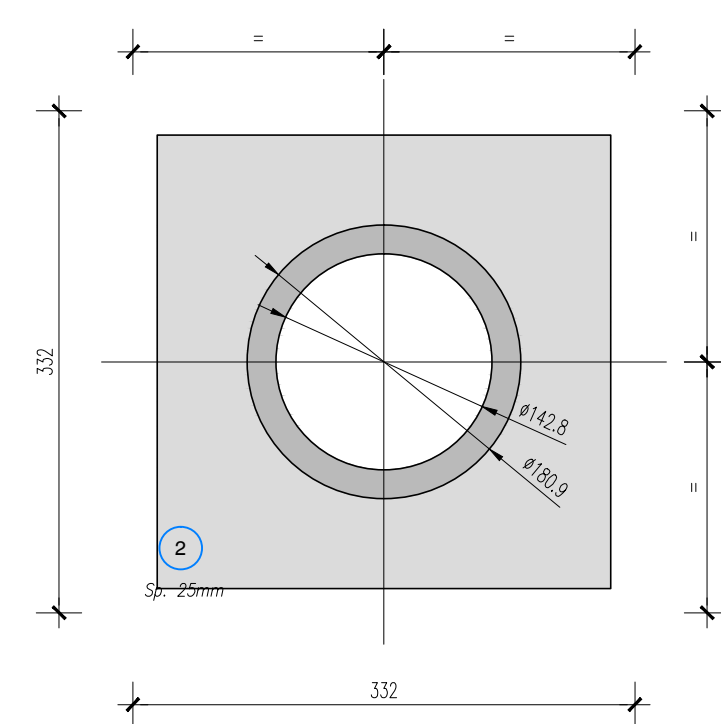


DETTAGLIO TESTA PALI POSTERIORI

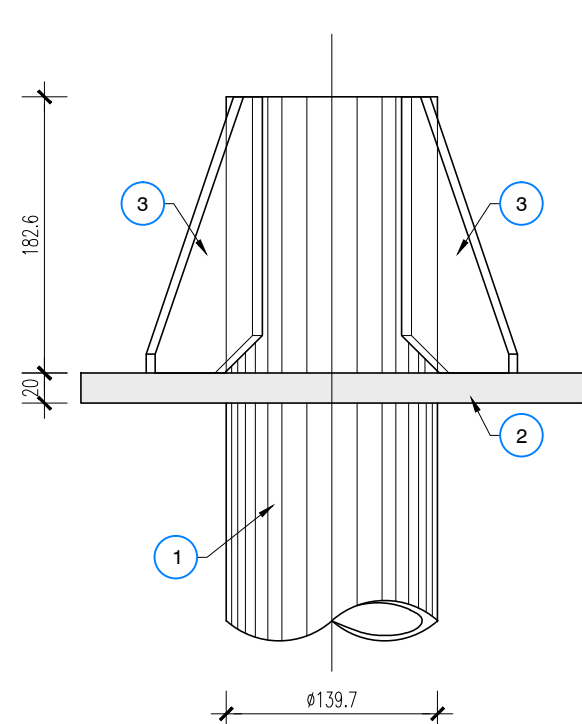
SEZIONE 3-3 SCALA 1:5



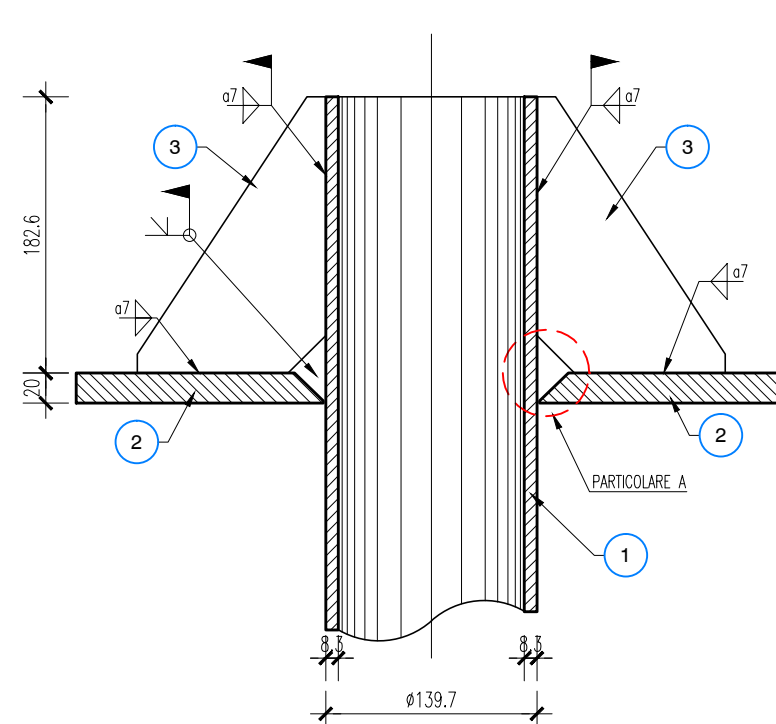
PIASTRA DI TESTA SCALA 1:5



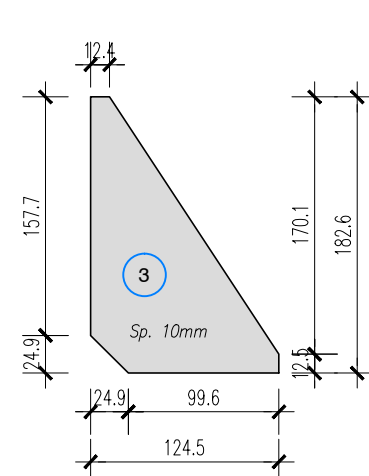
VISTA SCALA 1:5



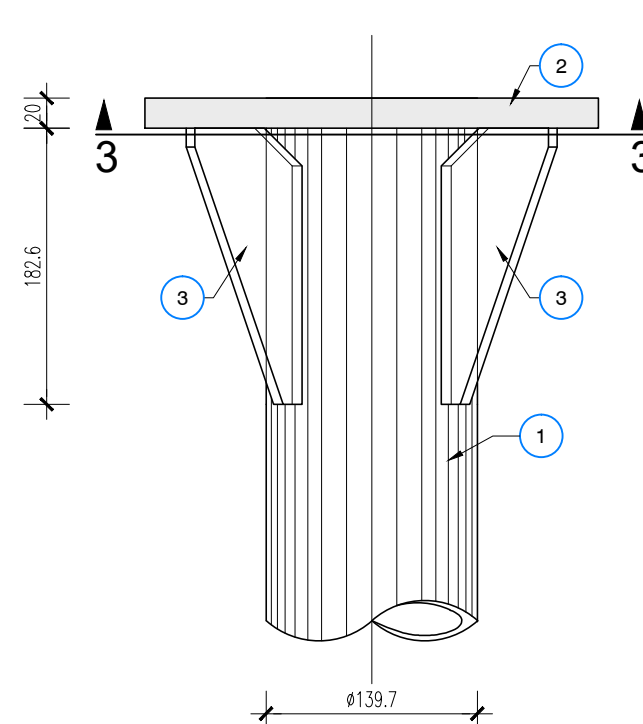
SEZIONE 1-1 SCALA 1:5



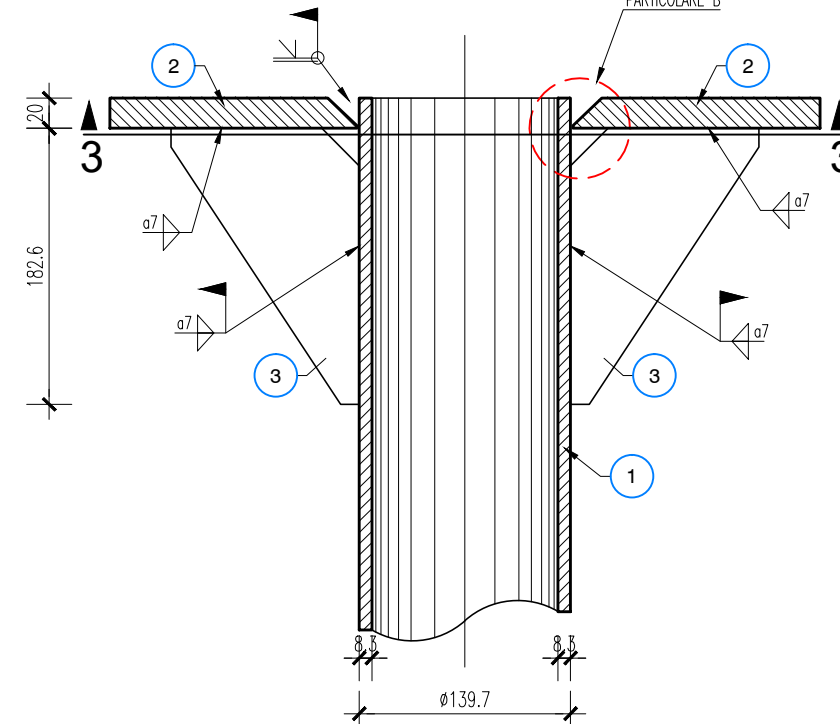
NERVATURA SCALA 1:5



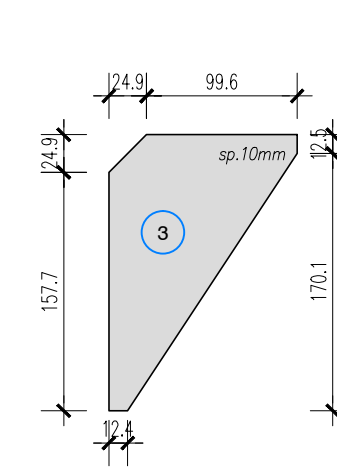
VISTA SCALA 1:5



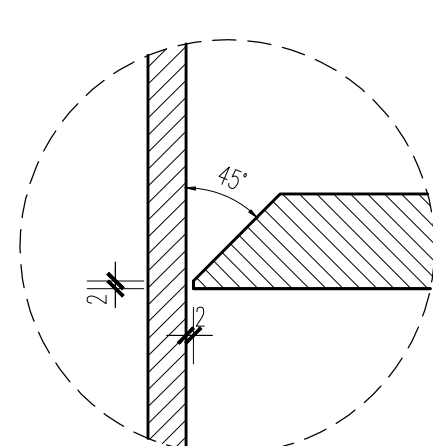
SEZIONE 2-2 SCALA 1:5



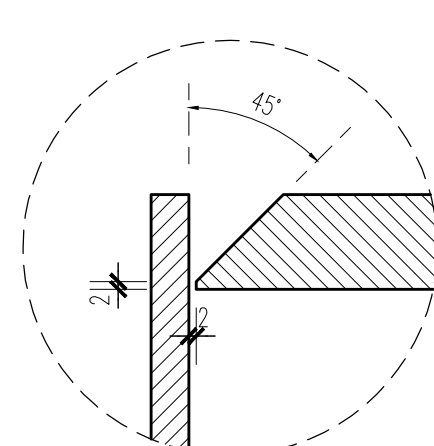
NERVATURA SCALA 1:5



PARTICOLARE "A" SCALA 1:2



PARTICOLARE "B" SCALA 1:2



Marca	Descrizione	Materiale	Norma
1	Tubo Ø139.7, sp.10, laminato a caldo, senza saldature, non valvolato	S355 JOH	UNI EN 10210-2
2	Piastra forata e cianfrinata, 300x300 sp.20mm	S355 JO	UNI EN 10025
3	Piastra sagomata, 125x180 sp.10mm	S355 JO	UNI EN 10025

PROGETTO ESECUTIVO	DETTAGLI MICROPALI
-----------------------	--------------------

committente:	1090
progettista:	E
revisore:	0
avv.	07

PROVINCIA DI MANTOVA MN-E-409-M - LAVORI DI RIFACIMENTO DELLA CHIAVICA DEL RIO NEL COMUNE DI MANTOVA INTERVENTO DI MANUTENZIONE STRAORDINARIA PER IL RIPRISTINO FUNZIONALE DELLA CHIAVICA	07
--	----

07
