

AIPO

Agenzia Interregionale per il fiume Po



RIPRESA FRANA

CA LATTIS

DOCUMENTAZIONE FOTOGRAFICA



FIG. 1 AREA DI INTERVENTO — DS PO DI GNOCCA — LOC. CA' LATTIS — ST 71/73

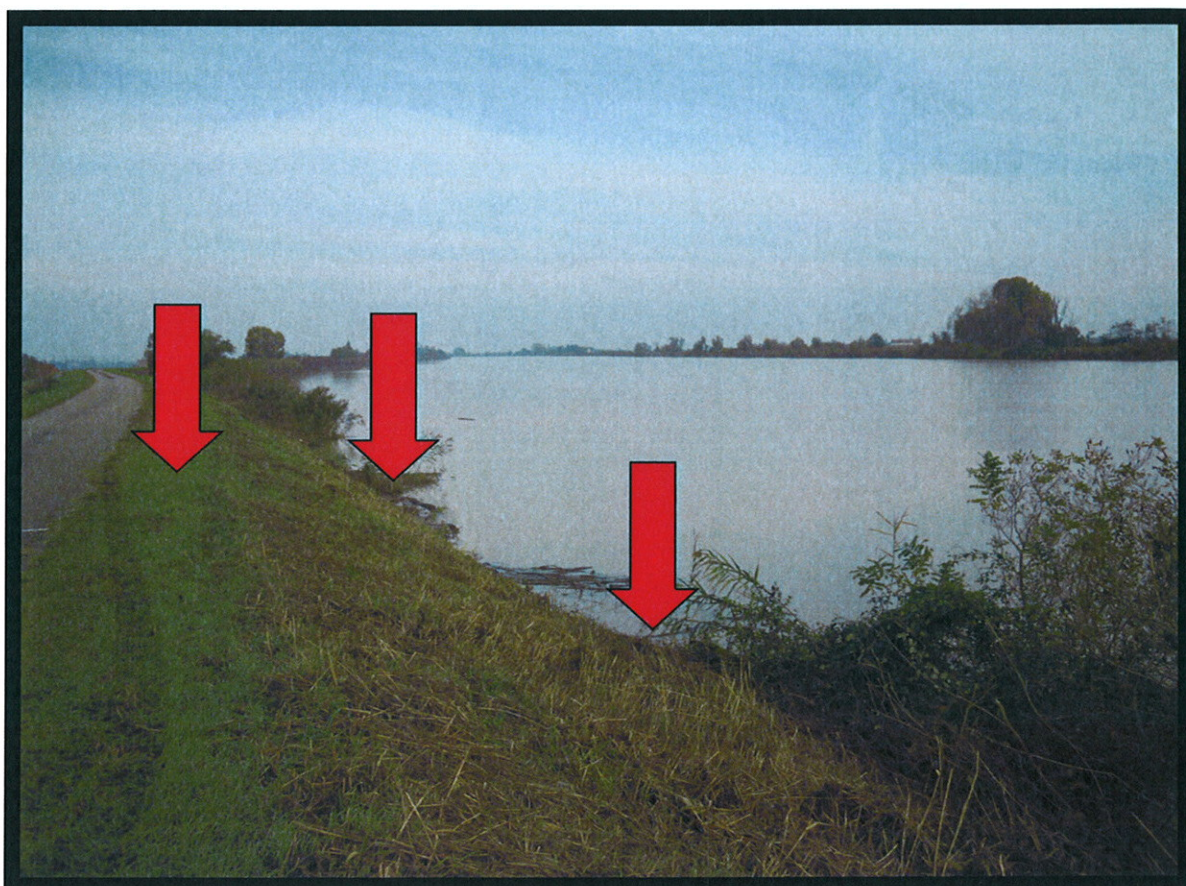


FIG. 2 EROSIONI E SMOTTAMENTO — DS PO DI GNOCCA — LOC. CA' LATTIS — ST 71/73

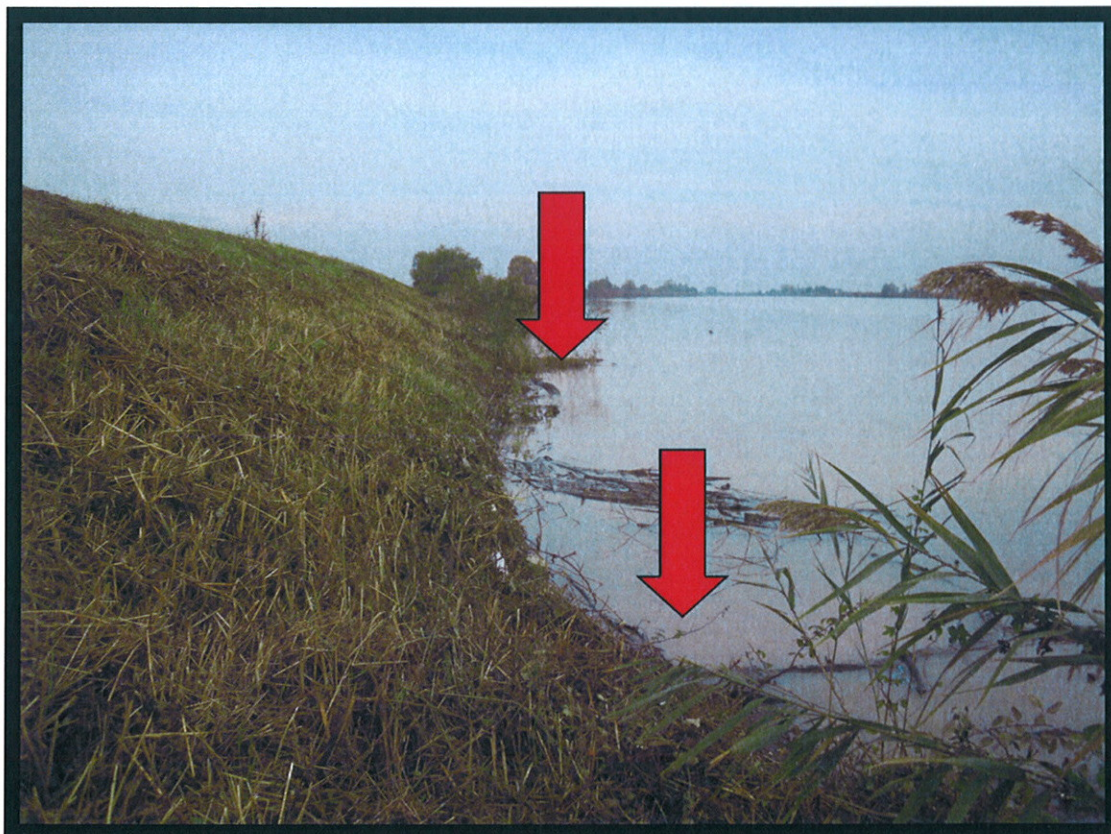


FIG. 3 EROSIONI — DS PO DI GNOCCA — LOC. CA' LATTIS — ST 71/73

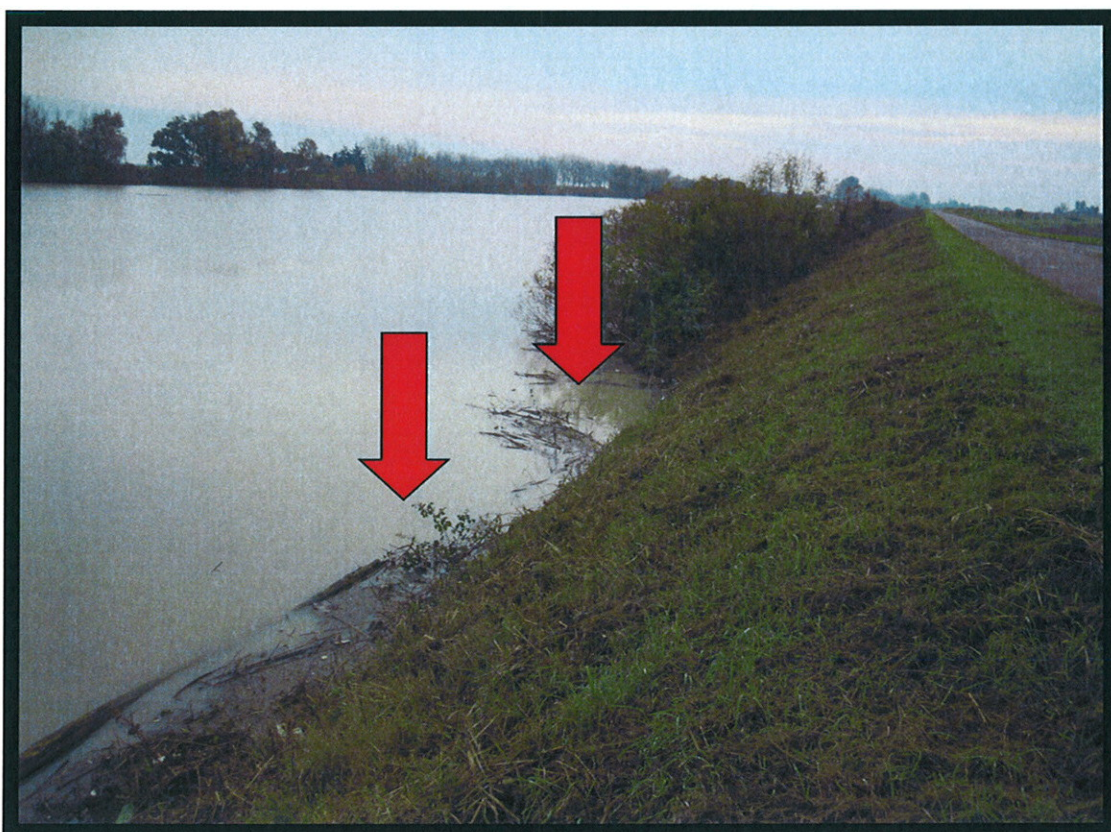


FIG. 4 EROSIONI — DS PO DI GNOCCA — LOC. CA' LATTIS — ST 71/73



FIG 5-6-7-8
EROSIONI
SPONDALI E
CEDIMENTI



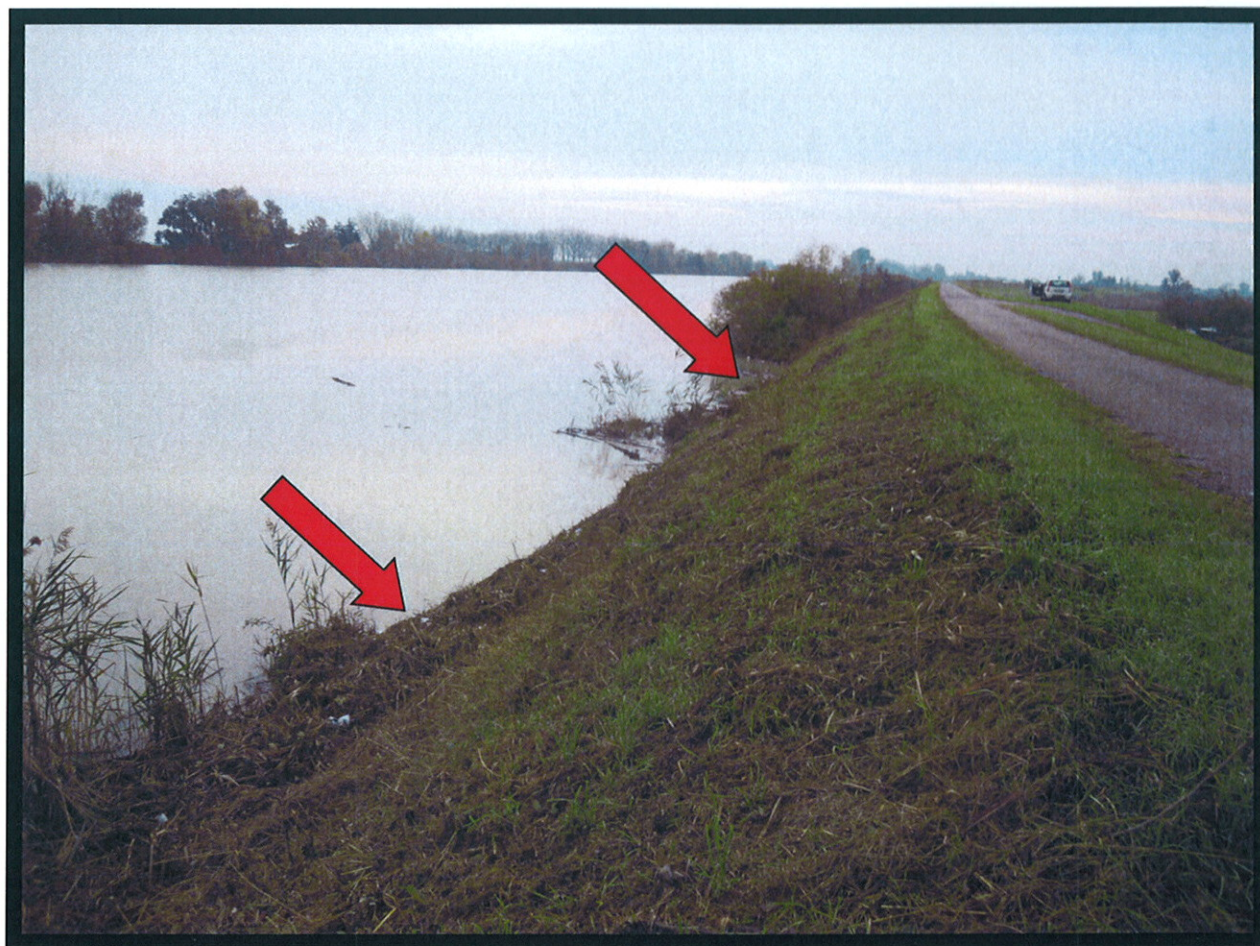


FIG. 8 EROSIONI — DS PO DI GNOCCA — LOC. CA' LATTIS — ST 71/73



FIG. 9 CEDIMENTI — DS PO DI GNOCCA — LOC. CA' LATTIS — ST 71/73